

iQunet.®



Wireless Asset Health Monitoring



**Winner BEMAS
Digital Innovation Award
2017
Wireless Vibration Sensor**

**Winner BEMAS Professional Jury
Digital Innovation Award
2021
Edge Anomaly Monitor 4.0**

**Finalist BEMAS
Digital Innovation Award
2022
Wireless Sensor Bridge**



Customer Use Case

Condition Monitoring with AI

Condition Monitoring on conveyors (International Airport)

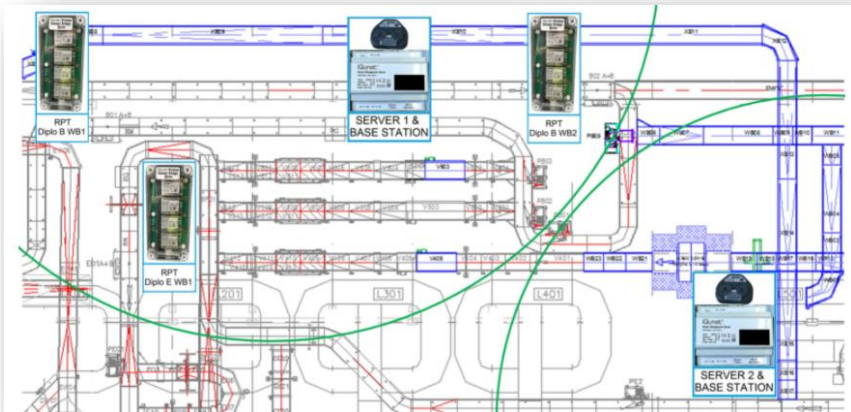
- Wireless Vibration monitoring (motor + gearbox + chain)
- Wireless Current waveform monitoring – MCSA (Var. Speed Drives)

iQunet.® Wireless Setup

Sensor Base Station



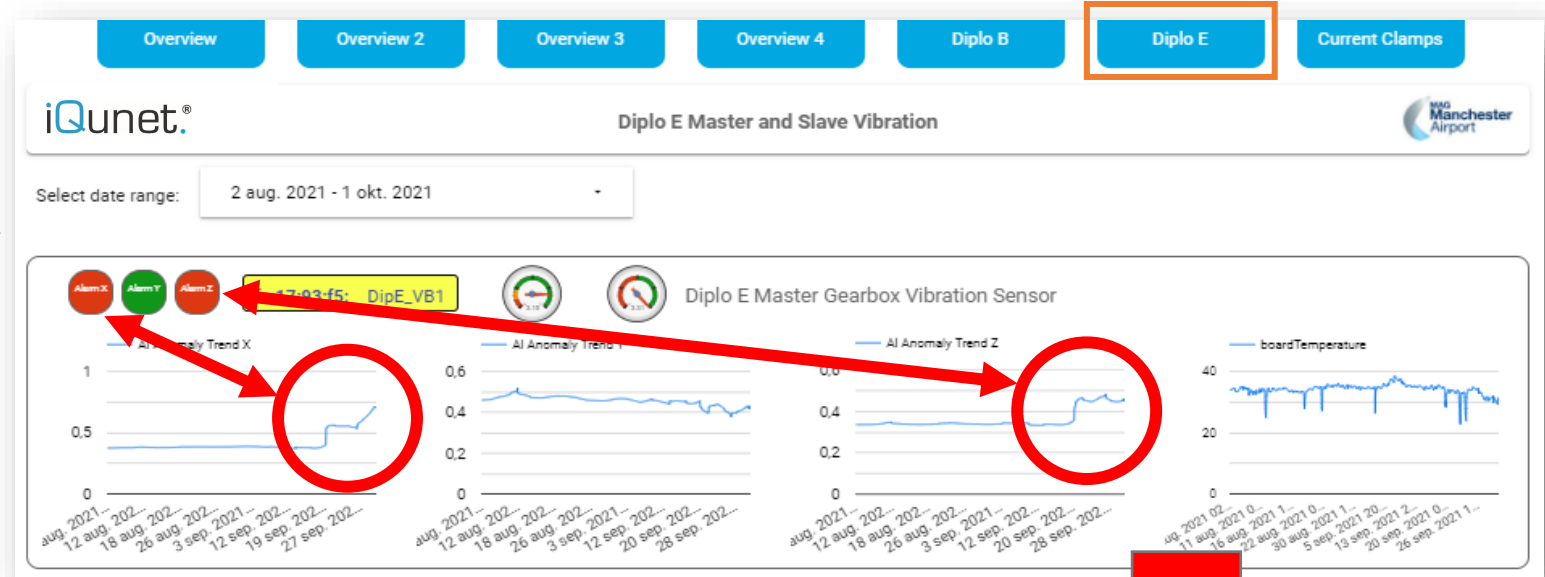
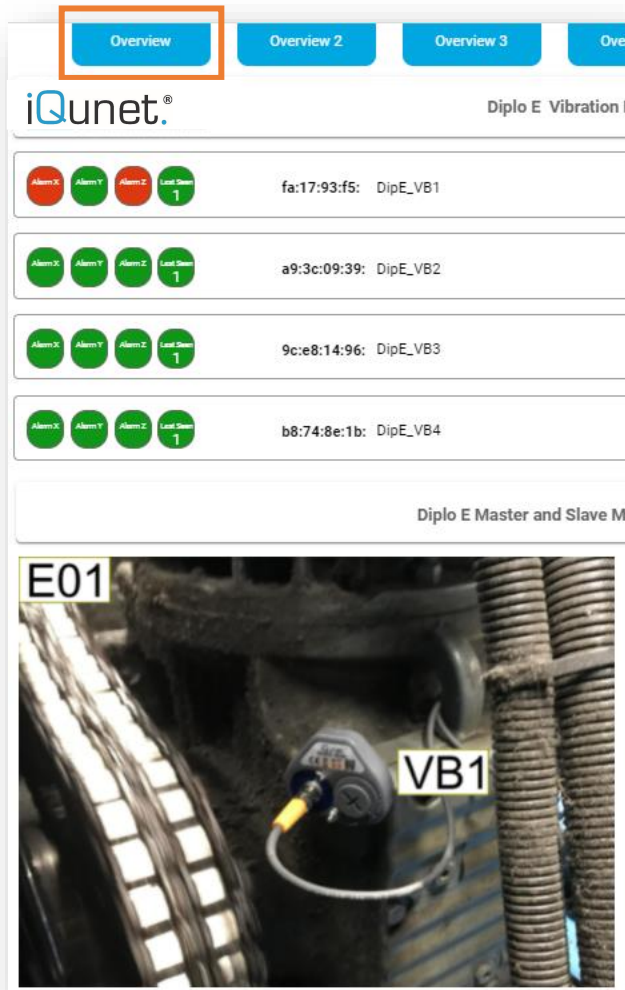
iQunet Edge Server



Wireless Bridge (Current Clamps)

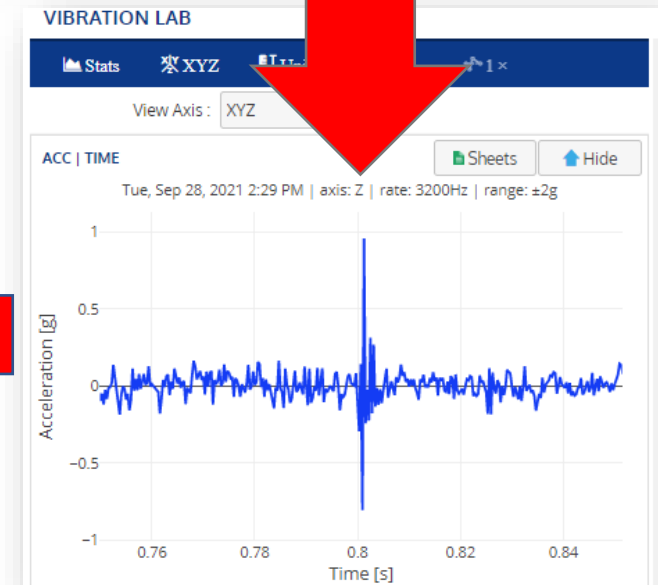


iQunet.® Vibration Monitoring

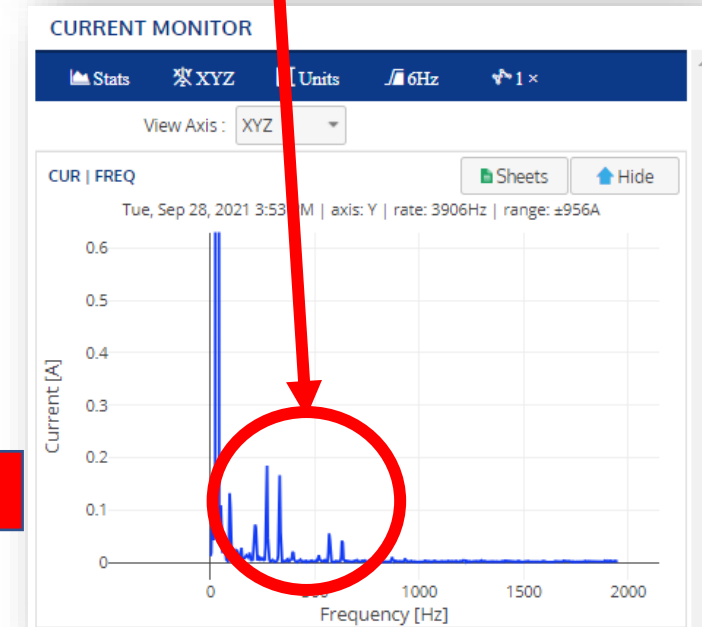
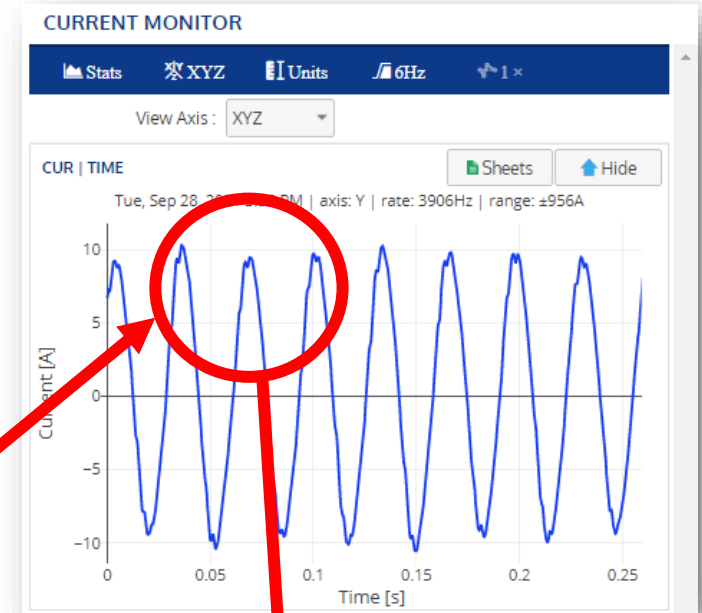
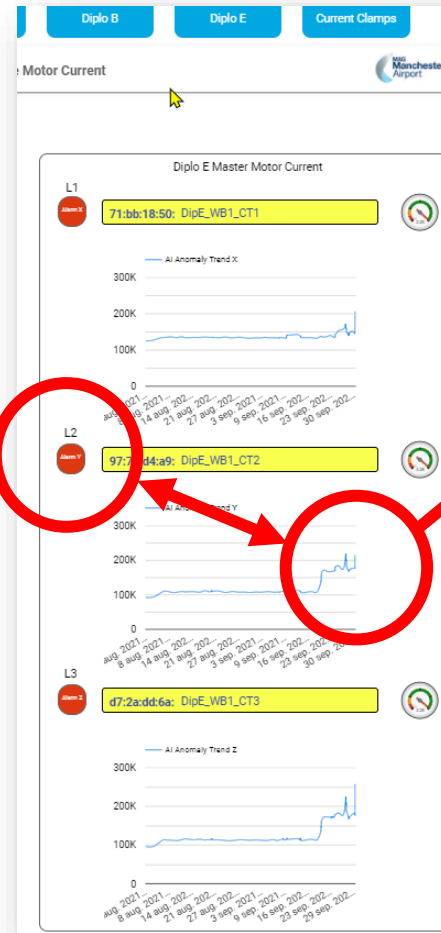
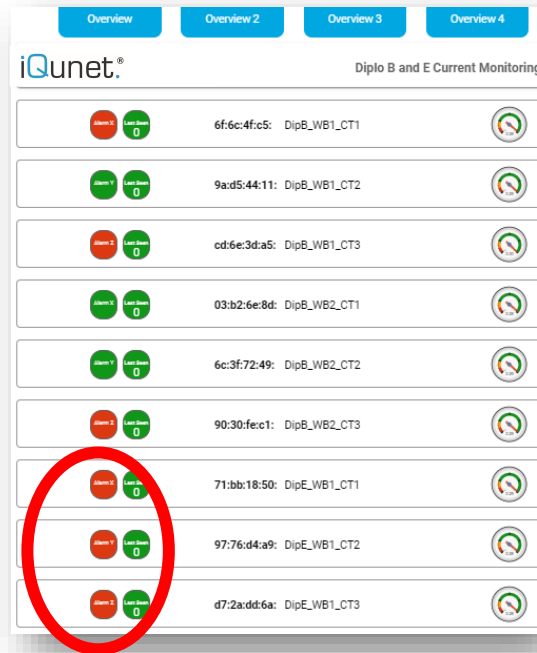
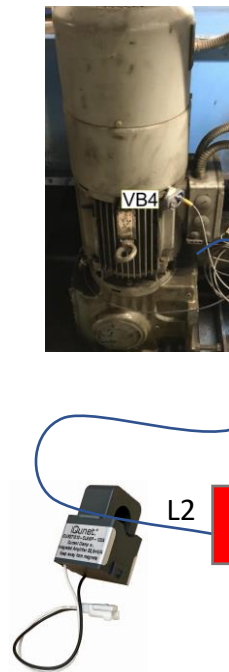


Impact detected (early warning)

- Recommended actions:
 - Check chain links
 - Check sprocket teeth
 - Lubricate and check change
- Follow behaviour to exclude gearbox inside teeth damage
- Follow up anomaly trend graphs



iQunet.® Wireless Motor Current Monitoring

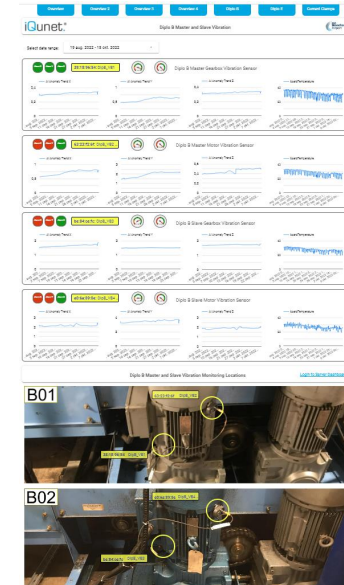


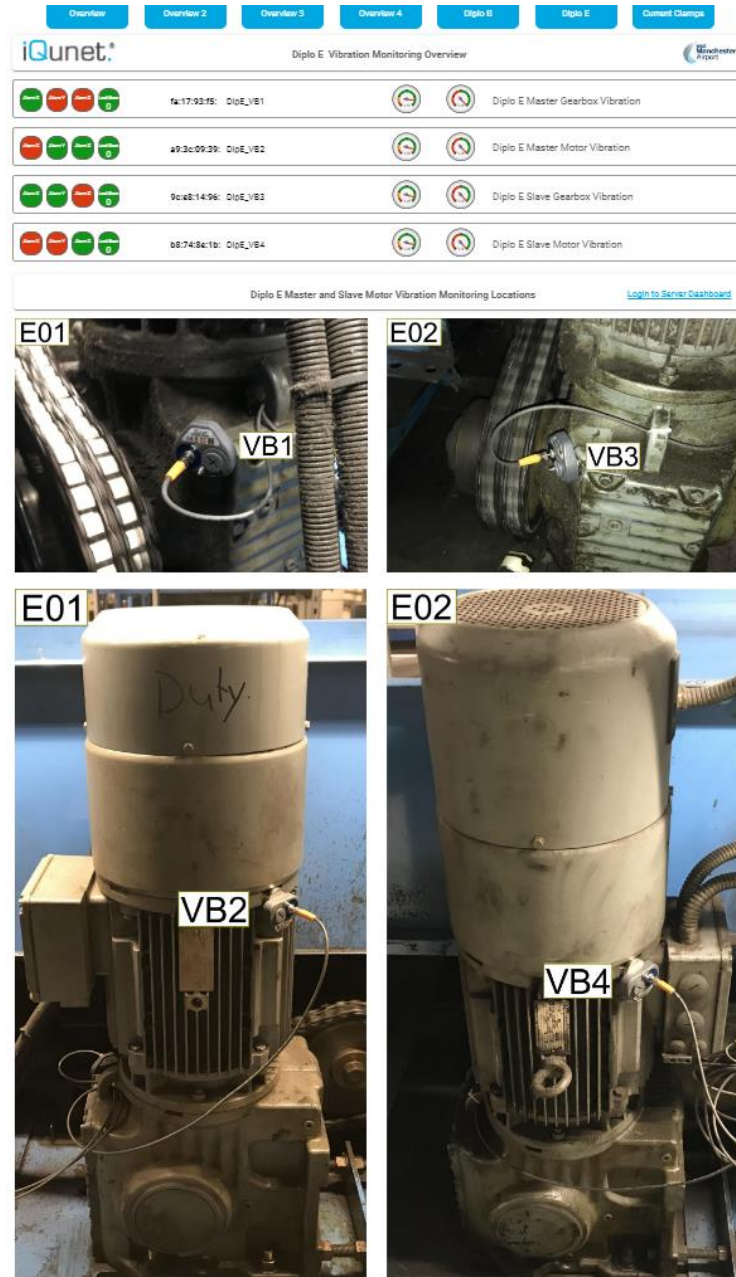
Motor Current [A] harmonics detected

- Recommended actions:
 - Follow up anomaly trend in time
 - Follow up harmonics in freq. domain
 - If quick sustainable increase, prepare for motor repair

iQunet.® Dashboards

- Management Dashboards





Overview dashboards

- Anomaly Detection Alarms (red buttons)
- Battery status gauges
- Background text

Features

- Easy switch to iQunet analytics dashboards
- Fully customizable solution by (granted) user
 - Change colors and layout
 - Add any pictures*

* Photographs are entered by user



Detailed dashboards

- Anomaly Detection Alarms (red buttons)
- Anomaly Detection trend graphs XYZ
- Temperature trend graph
- Battery status gauges

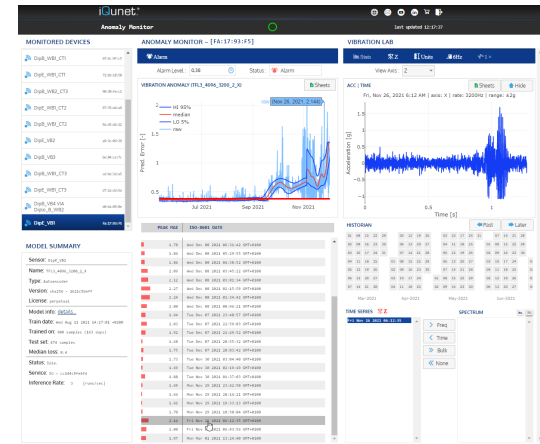
Features

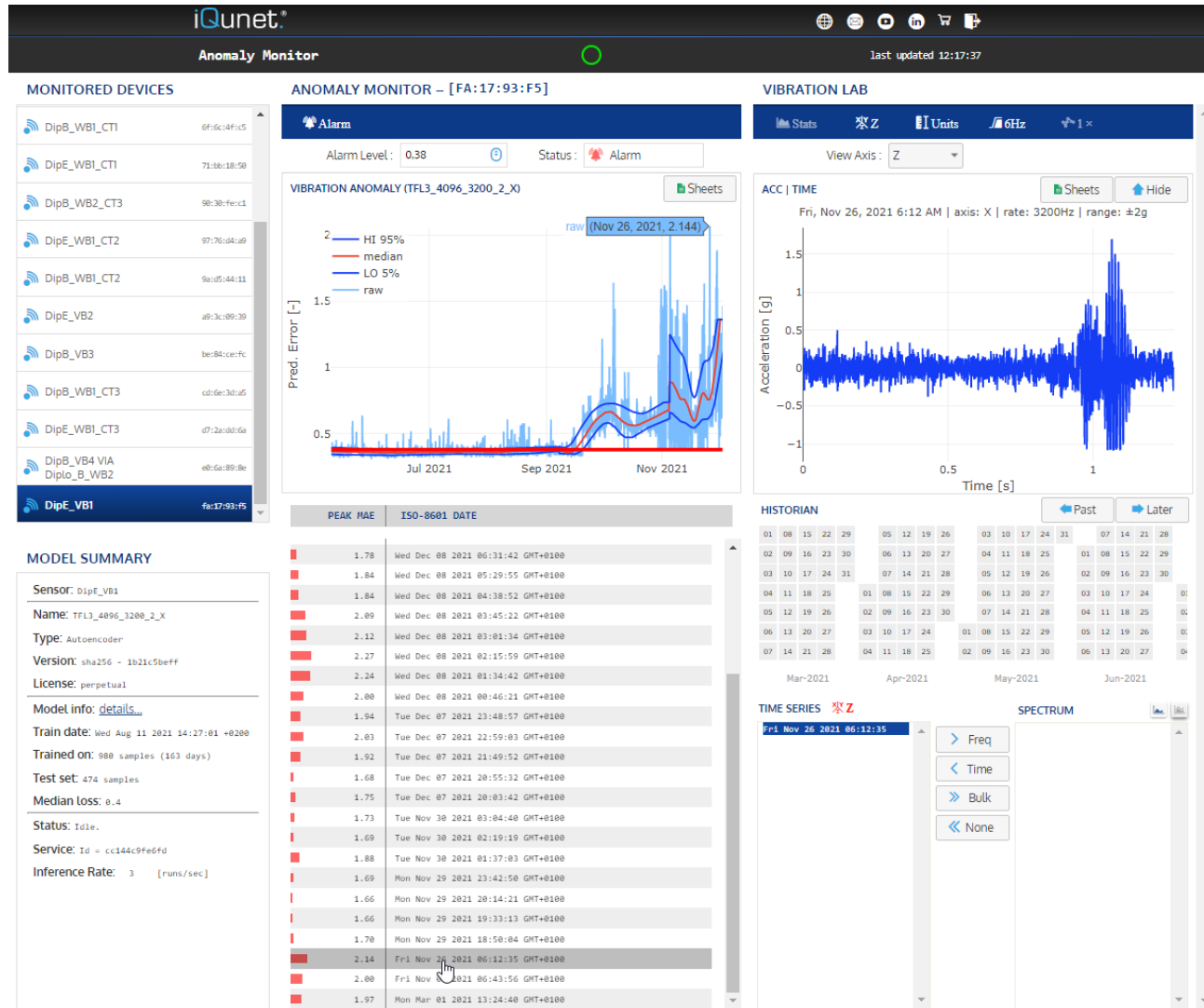
- Selectable period
- Easy switch to iQunet analytics dashboards
- Fully customizable solution by (granted) user
 - Change colors and layout
 - Add any pictures*

* Photographs are entered by user

iQunet.® Dashboards

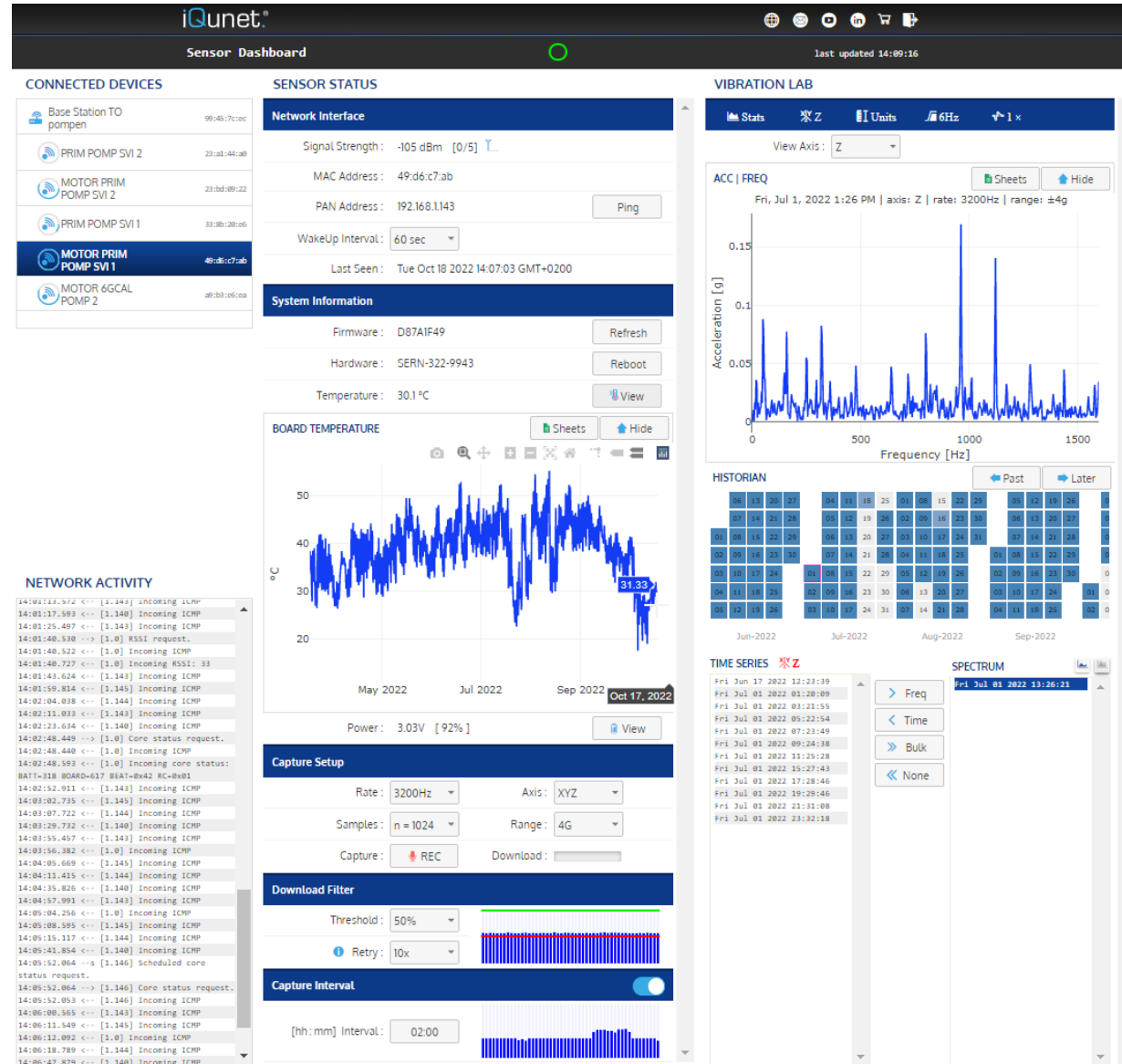
- Analytic Dashboards





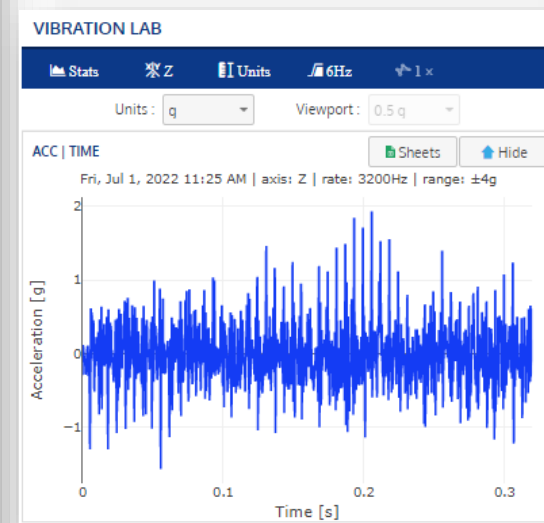
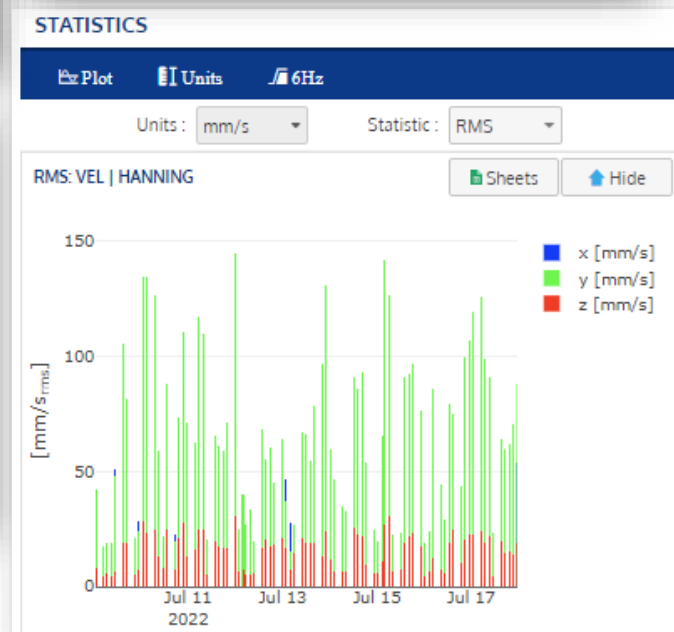
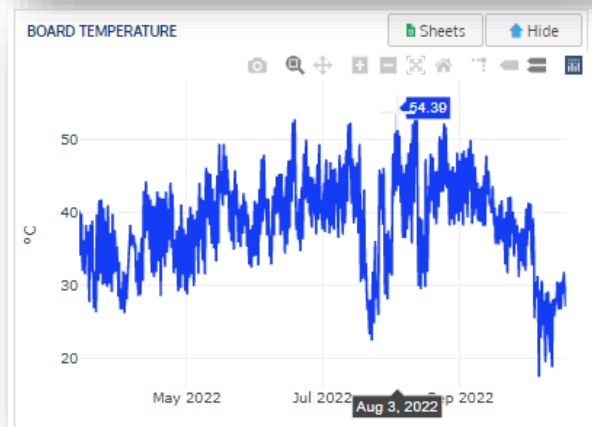
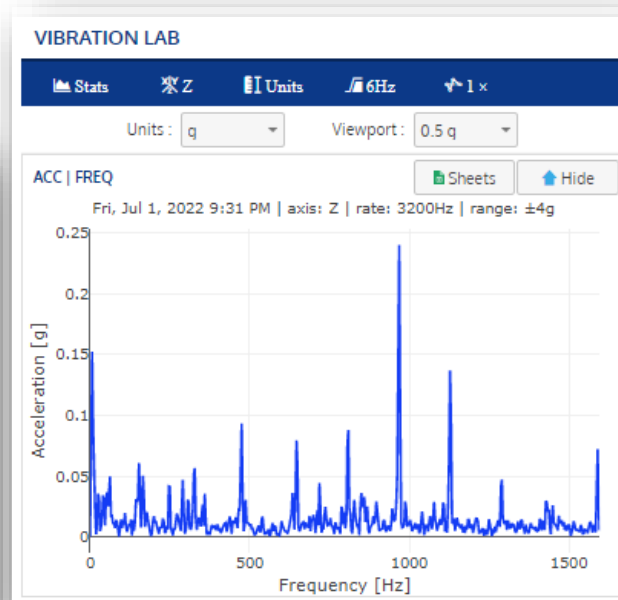
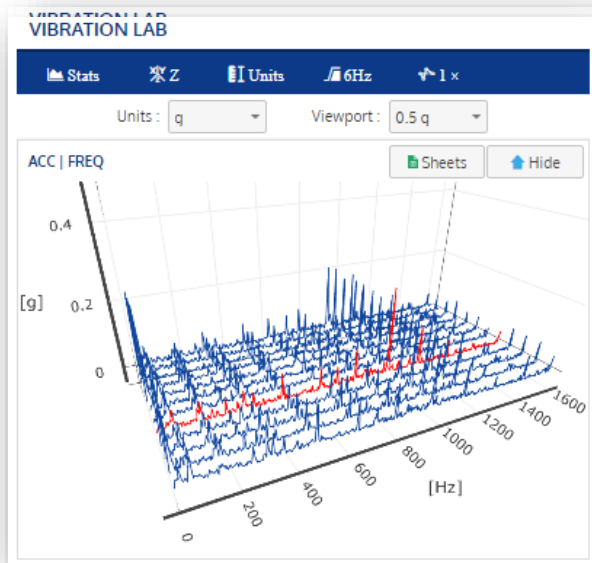
Anomaly Monitor Dashboard

- Anomaly Detection Alarms
- Anomaly Detection trend graphs XYZ
 - Raw anomalies
 - Trend lines (5%/50%/95% probability above set alarm level)
- Detailed AI model information
- Selectable list of peak anomaly values
- Immediate visualization of anomaly related
 - time series
 - FFTs
 - 3D-FFTs
- Analytical tools
 - Acceleration / velocity
 - Signal filtering & averaging options
 - Ax selection options
 - Historical data queries



Capturing and Analytics Dashboard

- General sensor information and overview
- Sensor Status information
 - Connectivity
 - Historical temperature graph
 - Historical battery level graph
- Capture setup pane
- Capture interval setup pane
- Sensor download threshold setup pane
- Analytics pane (historical data)
 - Vibration Lab
 - velocity and acceleration selection
 - HP filter settings
 - Time series graph
 - FFT graph
 - 3D FFT plot
 - Statistics
 - velocity and acceleration selection
 - HP filter settings
 - RMS trend graph
 - Kurtosis trend graph



Graphs functions

- Zoom
- Pan
- Autoscale
- Data comparison tools
- Orbital rotation tools
- Camera capture
- Hoover functions
- Google Sheets Graph export function
 - attribute consolidation in one file
 - Ideal for quick reporting of events

iQunet.®

Asset Health Monitoring Made Easy



Please contact us for a live demo (via online meeting)

www.iQunet.com

Contact:

Dirk Van den Branden

CEO / co-owner

T: +32 9 52 86 00 25

M: +32 478 44 66 20

dvdb@iqunet.com



Winner BEMAS Digital Innovation Award 2017

Winner Professional Jury BEMAS Digital Innovation Award 2021

Finalist BEMAS Digital Innovation Award 2022