



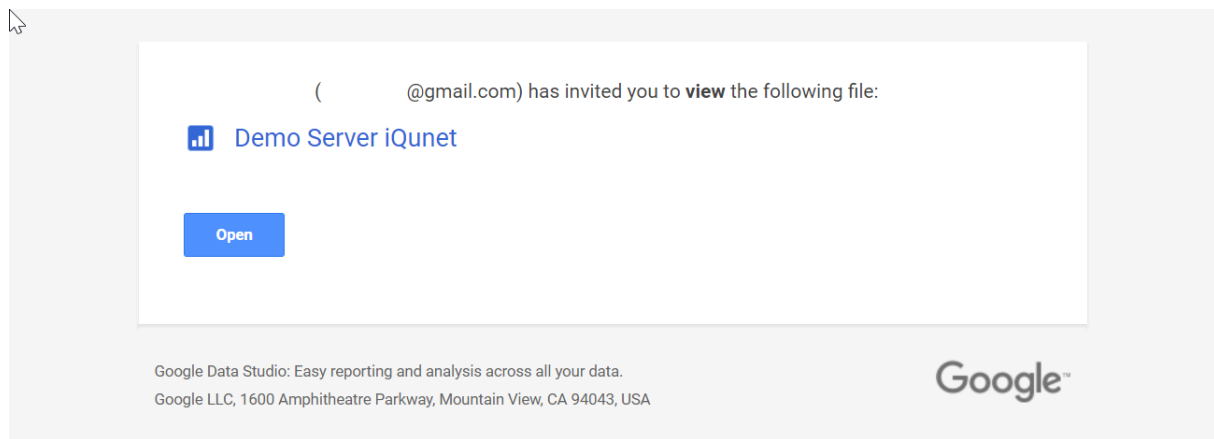
**Google Data Studio  
iQunet Connector  
Viewer User Manual**

## DATASHEET

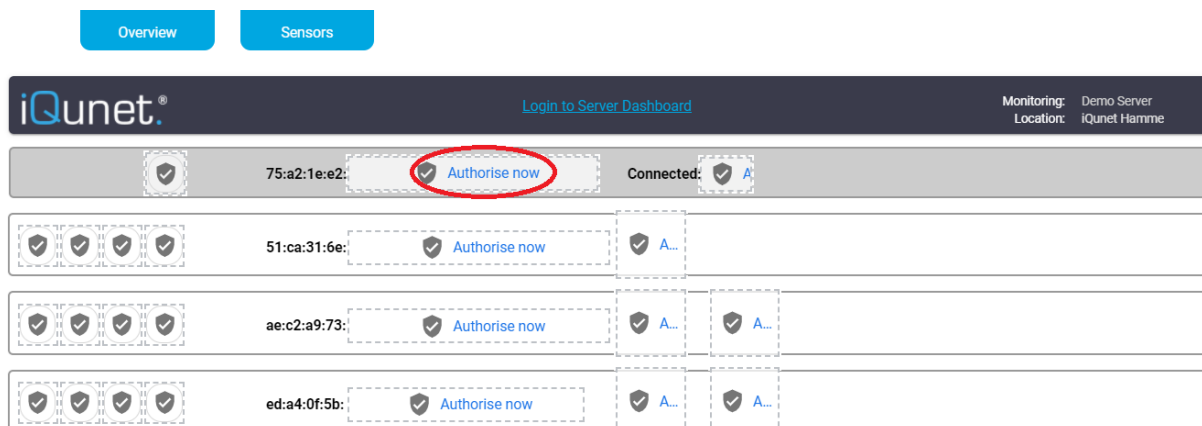
### How to open and view a Google Data Studio dashboard

#### 1. Open the Google Data Studio dashboard via email invitation

1.1. Go to your Gmail account inbox and open the 'Invitation to view' email. Click on 'Open'.

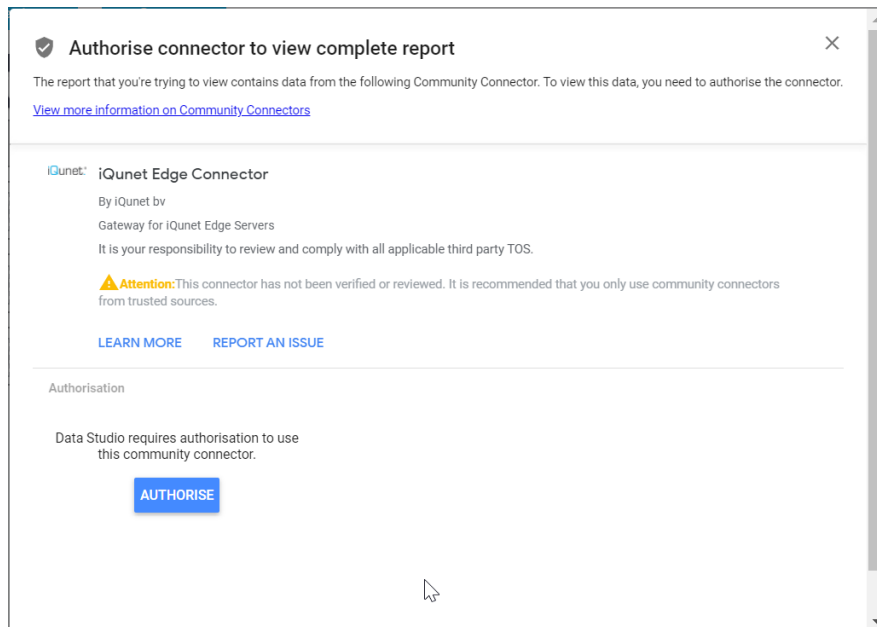


1.2. You will be asked to authorize the iQunet Edge Connector to view the complete report. If you immediately get a popup window when opening the report, click on the 'Authorise' button. If this popup does not show up, click on 'Authorise now' in one of the created charts.



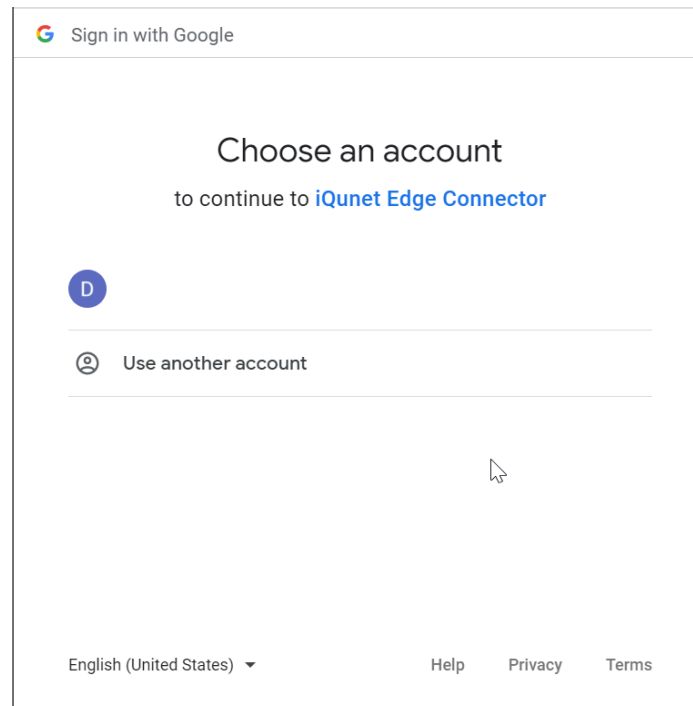
## DATASHEET

1.3. Click on the 'Authorise' button.



1.4. Select your Google account.

Remark: you can always create a dummy Google account for the iQunet Sensor Dashboard and Data Studio if you do not want to use your personal account.



## DATASHEET

1.5. You will get a warning that the app is not verified. You can ignore this warning. Click on 'Advanced' at the bottom left.



### This app isn't verified

This app hasn't been verified by Google yet. Only proceed if you know and trust the developer.

[Advanced](#)

BACK TO SAFETY

1.6. Click on 'Go to iQunet Edge Connector' at the bottom.



### This app isn't verified

This app hasn't been verified by Google yet. Only proceed if you know and trust the developer.

[Hide Advanced](#)

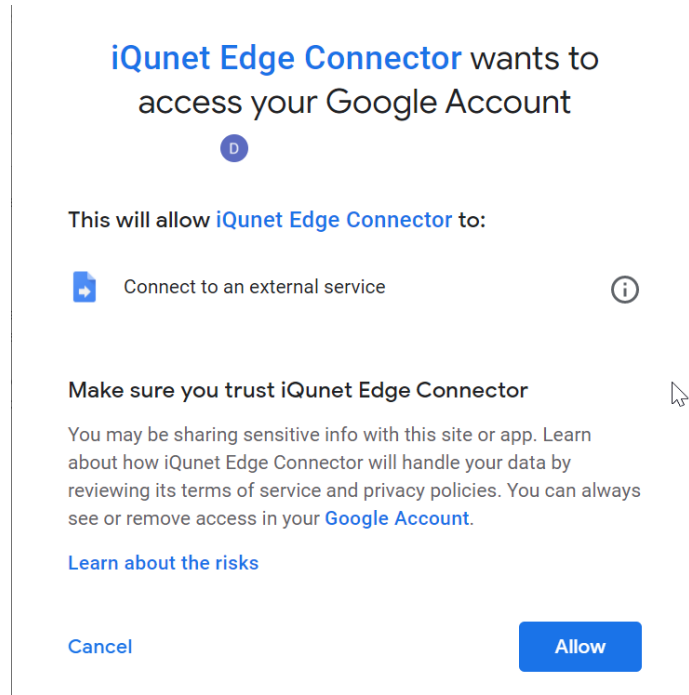
BACK TO SAFETY

Google hasn't reviewed this app yet and can't confirm it's authentic. Unverified apps may pose a threat to your personal data. [Learn more](#)

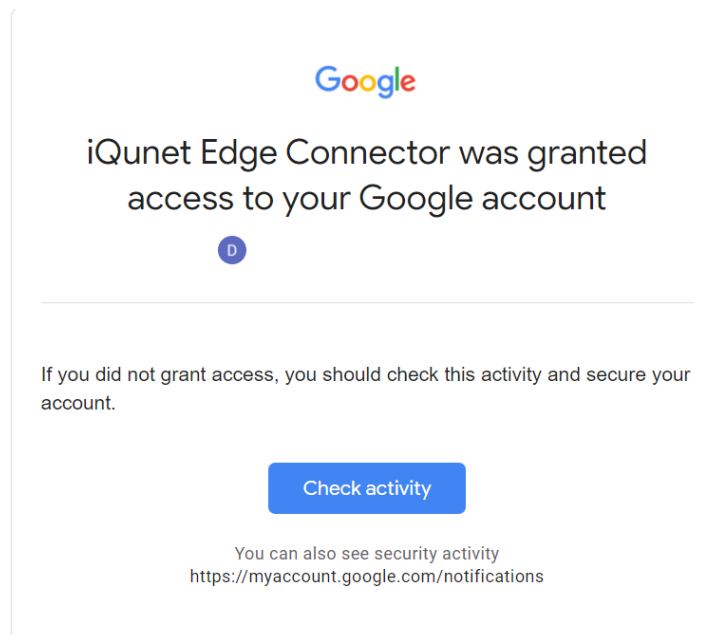
[Go to iQunet Edge Connector \(unsafe\)](#)

## DATASHEET

1.7. Allow the iQunet Edge Connector to access your Google account.

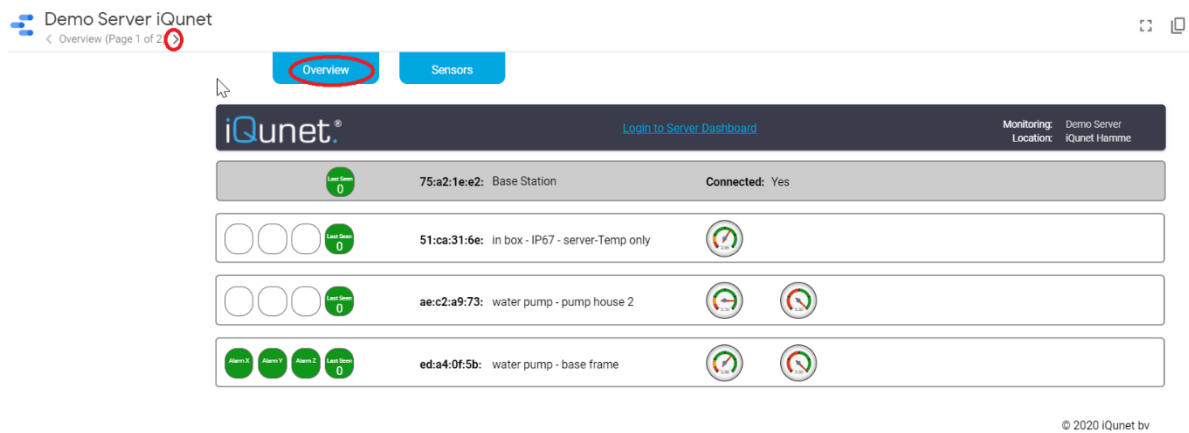


1.8. The iQunet Edge Connector is now authorized and the charts will start loading in the report. Depending on your account's security settings you might receive a text message or email warning you about the granted access. You can ignore this mail or check the activity and confirm that you granted the access.



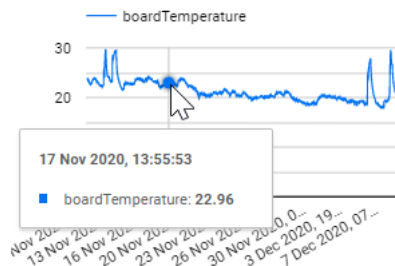
## DATASHEET

1.9. You can scroll through the different pages in the report by clicking on the light blue tabs at the top of the page (above the iQunet header) or by clicking on the arrow icons at the top left under the report title.



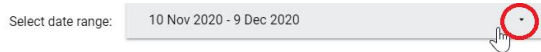
Remark: if you open a Google Data Studio report or reopen it by refreshing the browser, the data used in the report will be refreshed. However, if the download of new data values takes longer than 5 seconds, the report will show old, cached history values (the data available after the previous refresh). Google Data Studio report data is only automatically refreshed every 12 hours.

1.10. You can see the detailed data points by hovering the mouse over the graphs.

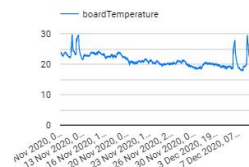
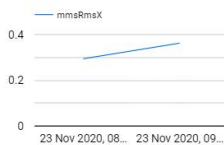


## DATASHEET

1.11. You can change the date range for the charts by clicking on the arrow icon. The selected range will apply for all charts on that page.



○ ○ ○ 51:ca:31:6e in box - IP67 - server-Temp only



### 2. Open the Google Data Studio dashboard via the report link

If you received a report link, simply copy the link into your browser to open the Data Studio report.

If you do not have access to the report, ask iQunet to change the permissions.

## Can't access report

Your current account

@gmail.com can't access this report, or the report doesn't exist.

If the Data Studio reports loads, follow steps 1.2. to 1.11. from section 1.