

INSTALLATION MANUAL – TECHNICAL INFORMATION

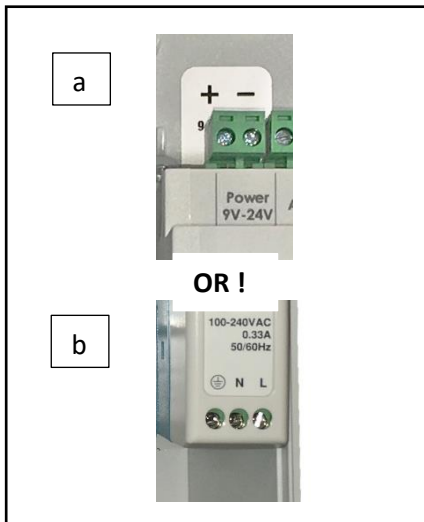
iQunet Server 24V Box +230V-24V Transformer ACCS617011-BOX-SERV24+230



INSTALLATION INSTRUCTIONS ACCS617011-BOX-SERV24+230



1. Open the box with the corner screws.
2. Install the M16 and M20 glands.
3. Install the back of the box against the wall, using the 4 corner holes (see Technical drawing).



4. Insert power cable (either a or b!)
 - a. Insert the 9-24VDC power cable via the gland and connect the DC power input from the Server with correct polarity.
 - b. Insert the 230VAC power cable to the transformer input. Connect the DC output from the transformer to the Server 24V input.
5. Tighten the M16 cable gland.



6. Connect the USB-A side from the Base Station USB cable in one of the USB inputs of the Server. Connect the extension cable according to the instructions from item ACCS616810-BOX-BS. Tighten the M16 cable gland.
7. Insert the network cable via the M20 gland to the 1 Gigabit port of the Server. Tighten the M20 gland.

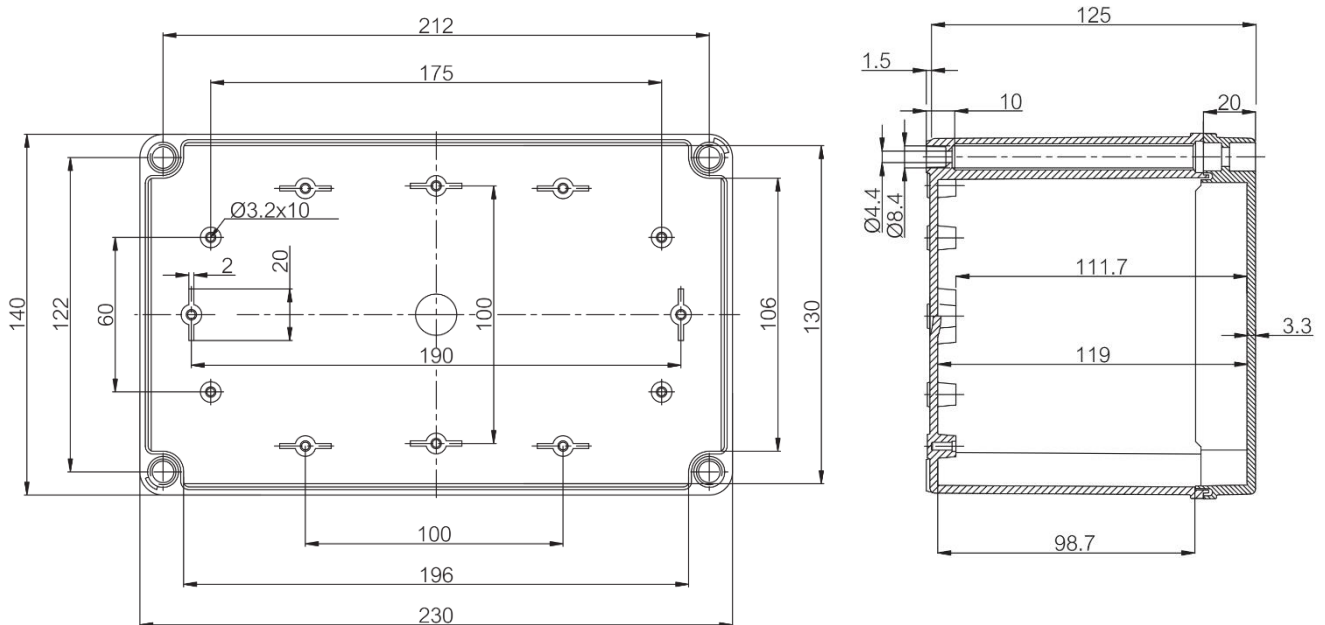


8. Power the system and test.
9. Close the box with the 4 corner screws.

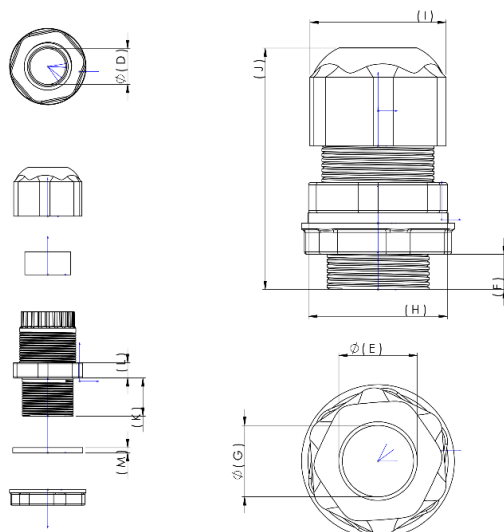
DATASHEET BOX

(part of ACCS617011-BOX-SERV24+230)

Dimensions:	Length	Width	Height	Rating:
mm:	230	140	125	Ingress Protection (EN 60529): IP66/IP67
inch:	9.1	5.5	4.9	Impact Resistance (EN 62262): IK08
Materials:				Electrical insulation: Totally insulated
Material:	Polycarbonate			Halogen free (DIN/VDE 0472, Part 815): 1
Base colour:	RAL 7035 -light grey			UV resistance: UL 508
Cover screws material:	Polyamide			Flammability Rating: UL 746C 5"
Cover colour:	RAL 7035 -light grey			Glow Wire Test (IEC 695-2-1) °C: 960
Cover screws colour:	Grey			NEMA Class: NEMA 1, 4X, 6, 12, 13
Gasket material:	Polyurethane			
Temperatures:				
Temperature °C (short term):	-40 ... 120 °C			
Temperature °C (continuous):	-40 ... 80 °C			



Gland types: 2 x M16 + 1 x M20; supplied with locknut and washer



Drawing Reference

	B	C	D	E	F	G	H	I	J	K	L	M
	Size	Colour	Cable clamp range	Thread Diameter (mm)	Thread Pitch (mm)	Clearance hole size	Spanner size Body	Spanner size- Locknut	Overall Length	Thread Length-measured from under hexagon on body	Nut thickness	Washer Thickness
	M16	Grey	5-10mm	16.00	1.50	16.2	19	22	43	15	5	2
	M20	Grey	10-14mm	20.00	1.50	20.2	24	27	46	15	6	2

- **Material:**
 - **Body & Nut:** PA 66 (Polyamide 66) UL 94 V2
 - **Seal:** Rubber
- **IP Rating:** IP67
- **Use:** for use with non-armored cable

Replacement type number: iQunet item#: 199210; SKU: SERV199210-IND-24V1A
 (extensive datasheet: <https://iqunet.com/resources/technical-datasheets-servers/>)



Technical specifications:

- **Physical:**
 - **Dimensions (mm):** 107 x 95 x 58 (WxHxD)
 - **Weight:** 180g
 - **Case material:** thermoplastic
- **Working temperature:** -0 to +50°C
- **Installation:** on DIN rail (35mm)
- **IP degree (IEC 529):** IP20
- **Operating temperature:** 0°C to +50°C
- **Power supply:** 24VDC, 1.2A max
 - 9-24V wide-range DC input
 - Reverse polarity protection
 - Integrated EMC protection circuits
- **Ethernet connection:** up to 300Mbps
- **WiFi:**
 - 2.4GHz and 5GHz IEEE 802.11.b/g/n/ac
 - wifi1 x 802.11n Wireless LAN
- **USB connection for Base Station:** 1 connection

Replacement type number: iQunet item#: 615310; SKU: ACCS615310-230V-24V1A



Technical specifications:

- **Physical:**
 - **Dimensions (mm):** 22.5 x 90 x 100 (WxHxD)
 - **Weight:** 190g
 - **Case material:** thermoplastic
- **Working temperature:** -20 to +70°C
- **Installation:** on DIN-Rail in box
- **Connection of wiring:** screw terminals
- **Input voltage:** 85-264 VAC range
- **Number of outputs:** 1
- **Electrical specifications Transformer**
 - **Transformer output current:** 1A (max)
 - **Output voltage:** 21.6-26.4 VDC
 - **Power:** 24W (max)